

Kaifeng Shengda Water Meter Co., Ltd is the water meter and flow meter manufacturer with many years rich experience since 1995, The company has advanced production facilities and high technology and has got many patent certificates.



MID

CE

ISO9001

ISO14001

ISO45001

STS

STS Prepaid Water Meter



Users of LXS-S series water meter can transfer 20-digit Token to the water meter terminal through wireless or keypad to realize water recharging, which is convenient to operate and can be used for measuring and charging water consumption of residential houses and enterprises and public institutions. It realizes the change from the original staff's door-to-door meter reading and charging to the user's automatic payment, and puts an end to the phenomenon of malicious delinquency in water charges.

Functional Features

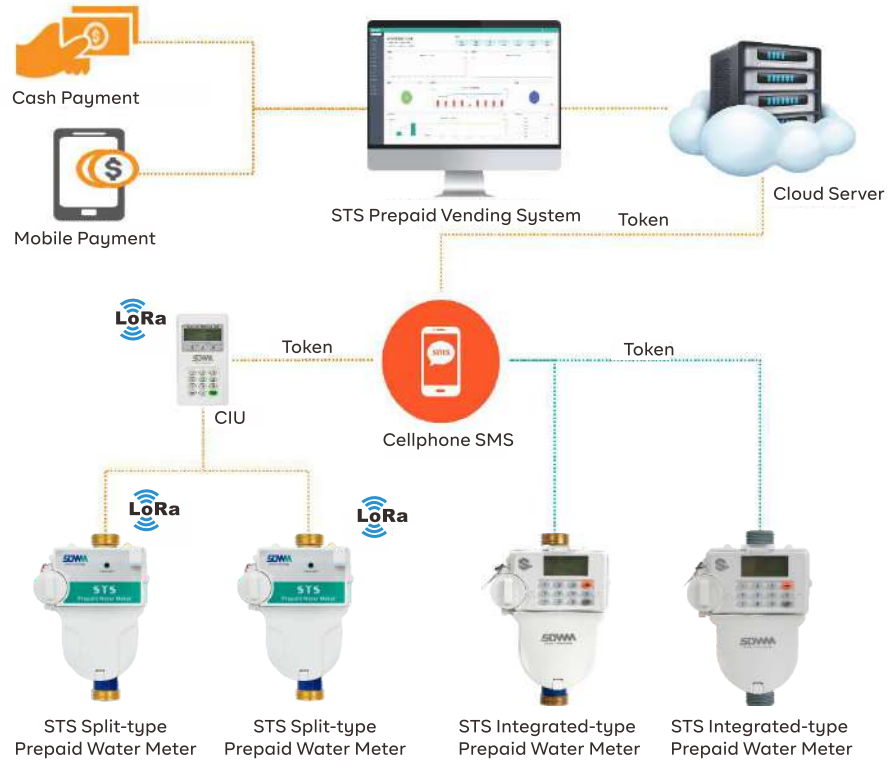
- Meets the requirements of STS standard with high encryption level.
- Adopts electromechanical separation mechanism design.
- Independent battery compartment, easy to replace the battery.
- Adopts high-capacity battery, the service life can reach more than 10 years.
- All-in-one LORA-RF communication (optional).
- Anti-magnetic, anti-interference, low voltage alarm.
- Balance alarm to prevent underpayment.
- Cardless recharge in various ways (cell phone M-PESA recharge, Alipay, MTN, Airtel, etc.)

Technical Parameter

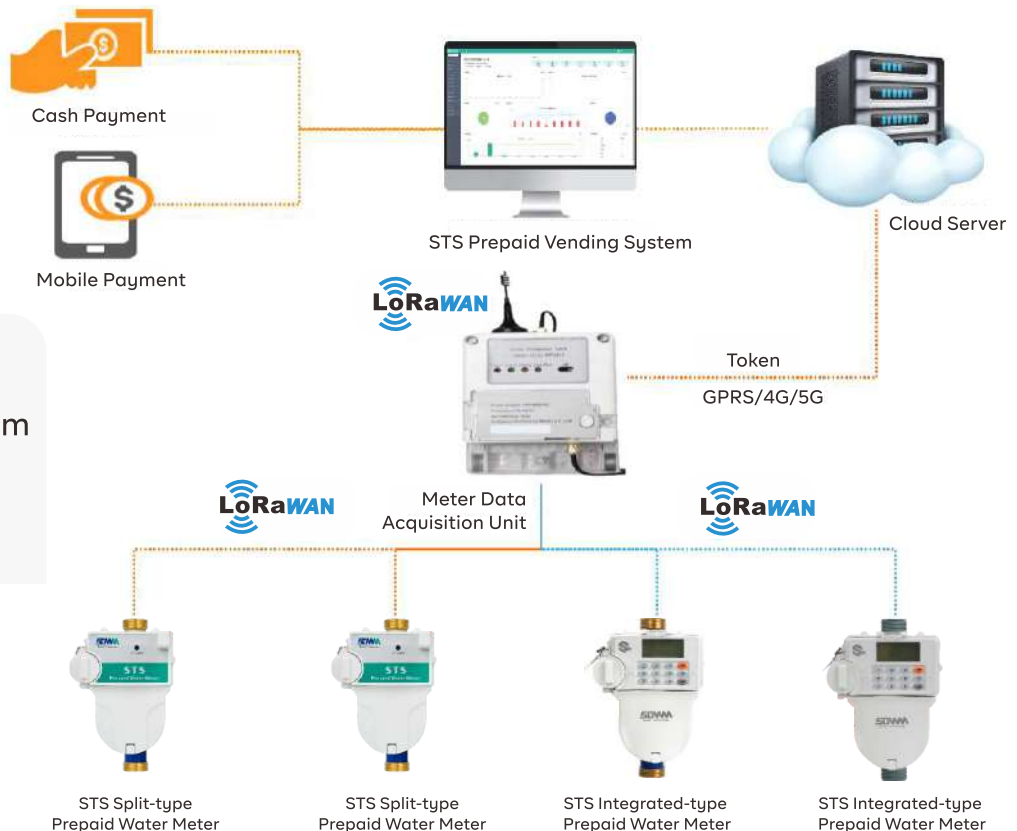
Module power supply:	DC3.2V-3.7V
Whole power consumption:	$\leq 15\mu A$
Waterproof class:	Split type (IP68), Integrated type (IP65)
Environmental class:	Class B
Electromagnetic environment:	E1
Measurement class:	Class 2
Temperature class:	T50
Sensitivity grade:	U10/D5
Meter body material:	Brass/Nylon
Conformity standard:	ISO4064-2014
Display value error range:	The maximum allowable error of high area flow ($Q_2 \leq Q \leq Q_4$), $\pm 2\%$ when the water temperature range is $0.1^\circ C \sim 30^\circ C$. If the water temperature is higher than $30^\circ C$, it is $\pm 3\%$. Low zone flow ($Q_1 \leq Q < Q_2$) of the maximum permissible error of $\pm 5\%$, regardless of the water temperature range

System Construction

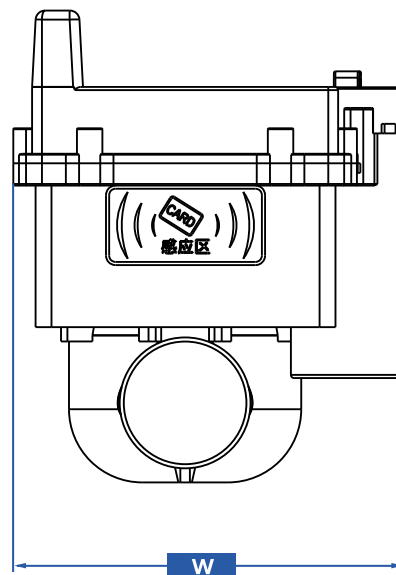
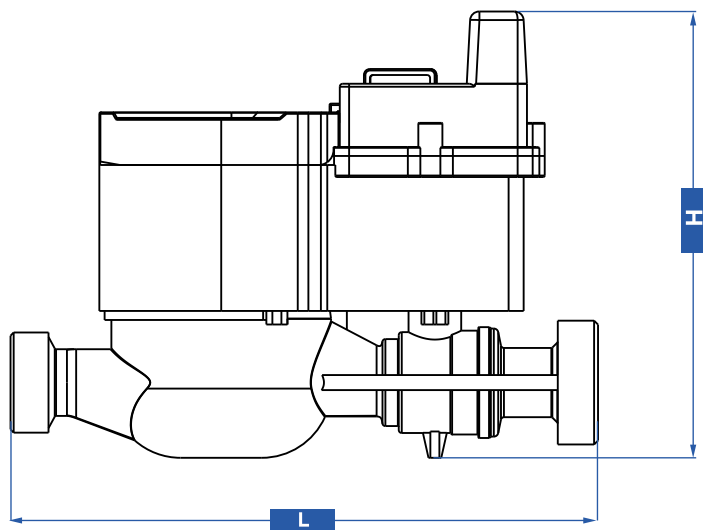
Scenario I: Billing System Architecture Diagram



Scenario II Remote System Architecture Diagram



Major Technical Parameters



Size	Ratio(Q3/Q1)	L(mm)	H(mm)	W(mm)	Thread Size	Weight/Brass(Kg)
DN15	R100/R160	165	120	128	G ³ / ₄ B	1.35
DN20	R100/R160	195	120	128	G1B	1.55
DN25	R100/R160	225	120	128	G1 ¹ / ₄ B	1.95

CONTACT US

Welcome to cooperate with us in future!

✉ admin@henanpanda.com

☎ +86 18603780816

🌐 www.sdflovmeter.com

