

Smart card Prepaid Water Meter

Model: LXSK-15-40, LXLK-50-300

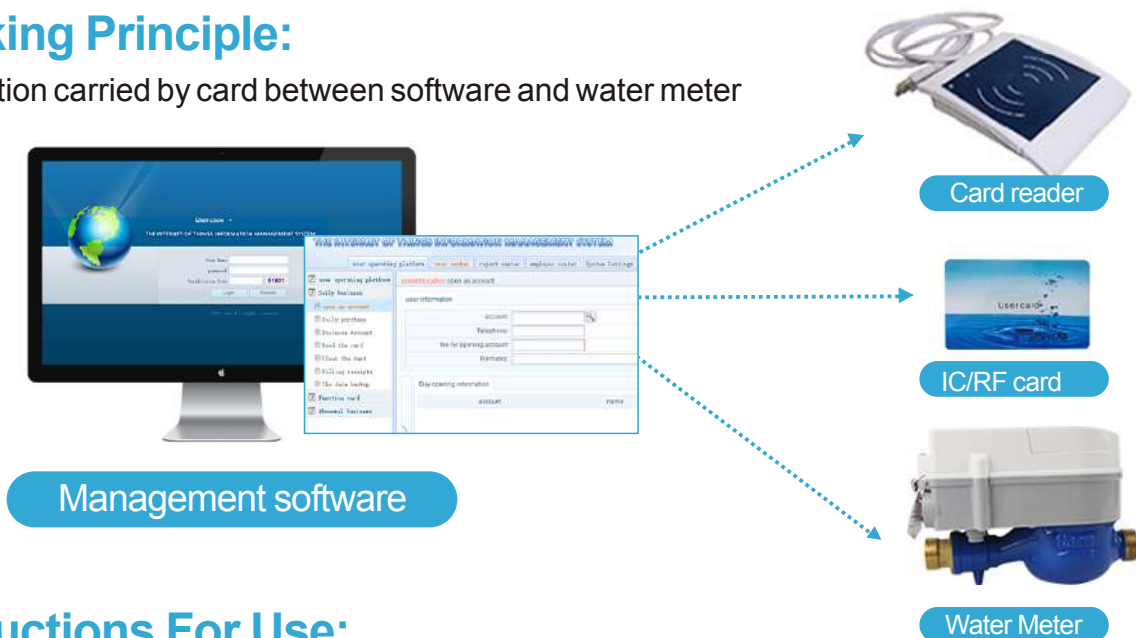
SHENGDA
Fluid technology

Smart card prepaid water meter can bring a lot of convenience for water supply management departments and water users, The water supply department doesn't need to read meters at the door, and charges at the door, which reduces the operation cost.



Working Principle:

Information carried by card between software and water meter



Instructions For Use:

1. End-users pre-purchase water volume with the IC card from the water management department.
2. The water management department person create a new user account for management and write the purchased water volume into the IC card by software (shengda offered for you for free)
3. The end-user swipe the IC card to the card-swiping area of the water meter. At this time, the LCD of the water meter will display the water volume left and open the valve. The user can use the water.
4. The end-user begins to use water and the remaining water volume decrease. When the water volume left is reaching to a setting amount (such as 3m³), an alarm signal will be generated to remind the end-user to purchase water volume

Supplied condition: (Size: DN 15~DN 300)

- ▶ Body: Brass, Nylon, stainless steel
- ▶ Type: Dry dial or wet dial (standard)
- ▶ Max work pressure: PN16.
- ▶ Protection class: IP68
- ▶ Pressure loss: ≤ 0.063 Mpa
- ▶ Water temperature: T30, T90
- ▶ Standards: ISO4064 Class B
- ▶ Certificate: MID
- ▶ Maximum reading: 99999.9 m³
- ▶ Battery life: ≥ 6 years
- ▶ Software: free for clients
- ▶ Composition: Network servrt. smart card, card reader.

Function:

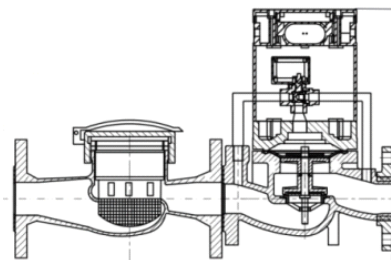
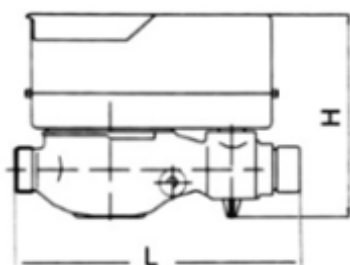
1. Non-contact IC card technology, wireless data transmission is used which make the water meter easy to operate.
2. The body of the prepaid water meter is IP68 waterproof which can be completely immersed in the water.
3. The water meter open and close the valve periodically to prevent the water meter from blocking.
4. It will make alarm or close the valve when the water volume in the card is insufficient to remind the user to purchase.
5. The water meter will close the valve automatically when the remaining water volume is 0, And the water meter will open the valve after swiping the card in which the user had already purchased water volume.
6. When the water meter come across the magnetic attack, the water meter will automatically close the valve.
7. Detailed LCD display, the data will not lost even without power and can be stored for more than 10 years.
8. High temperature resistance, low power and low pressure loss;
9. The battery life of the water meter is more than 6 years and can be replaced. When the battery power is insufficient, the display of the water meter have alarm indication.

Product Technical Parameters:

Size (mm)	Flow range		Q3	Q4	Q2	Q1	Min. Reading	Max. Reading
	Q3/Q1	Q2/Q1	m ³ /h				m ³	
DN15	80	2.56	2.5	3.125	0.05	0.03125	0.0001	99999
DN20	80	2.56	4.0	5.0	0.08	0.05	0.0001	99999
DN25	80	2.56	6.3	7.875	0.126	0.07875	0.0001	99999
DN32	80	2.56	10	12.5	0.2	0.125	0.0001	99999
DN50	80	2.56	25	31.25	0.5	0.3125	0.0001	99999
DN65	80	2.56	40	50	1.28	0.5	0.0005	999999
DN80	80	2.56	63	78.75	2	0.7875	0.0005	999999
DN100	80	2.56	100	125	3.2	1.25	0.0005	999999
DN125	80	2.56	160	200	5.12	2	0.0005	999999
DN150	80	2.56	250	312.5	8	3.125	0.0005	999999
DN200	80	2.56	400	500	12.8	5	0.0005	999999

Dimension and weight:

Size(mm)	Lenght	Width	Height	Thread	Weight
	L	B	H	D	
mm					kg
15	165	98	104	G3/4B	1.5
20	195	98	106	G1B	1.7
25	225	104	120	G 1 3/4 B	2.6
32	230	104	120	G 1 3/2 B	2.8
40	245	125	155	G2B	2.5
50					
/	/	/	Flange	Connecting bolts	/
65	430	300	185	4-M16	28
80	530	330	200	4-M16	40
100	580	365	220	8-M16	52
125	605	395	299	8-M16	85
150	705	450	319	8-M20	87
200	795	500	340	8-M20	120



Installaton:

1. The straight pipe length before inlet should be 10 times of the water meter diameter, straight pipe length behind outlet should be 5 times of the water meter diameter.
2. Water flow direction should be the same as the arrow on the water meter body indicates.
3. Climate and mechanical environment should be grade B.
4. Electromagnetic environment class should be E1 level.

Shengda Water Meter since 1995

Established in 1995, Shengda Water Meter Co., Ltd is one of leading manufacturer of water meters and flow meters in China. The company also provides total solutions for smart flow metering, control, telemetry and smart water meter reading system.

SHENGDA
Fluid technology

Kaifeng Shengda Water Meter Co., Ltd

✉ admin@henanpanda.com

☎ mobile +86 18603780816

🌐 www.sdflowmeter.com